

IWSS Utility Hook-Up Project Overview

September 19, 2016 – December 13, 2016

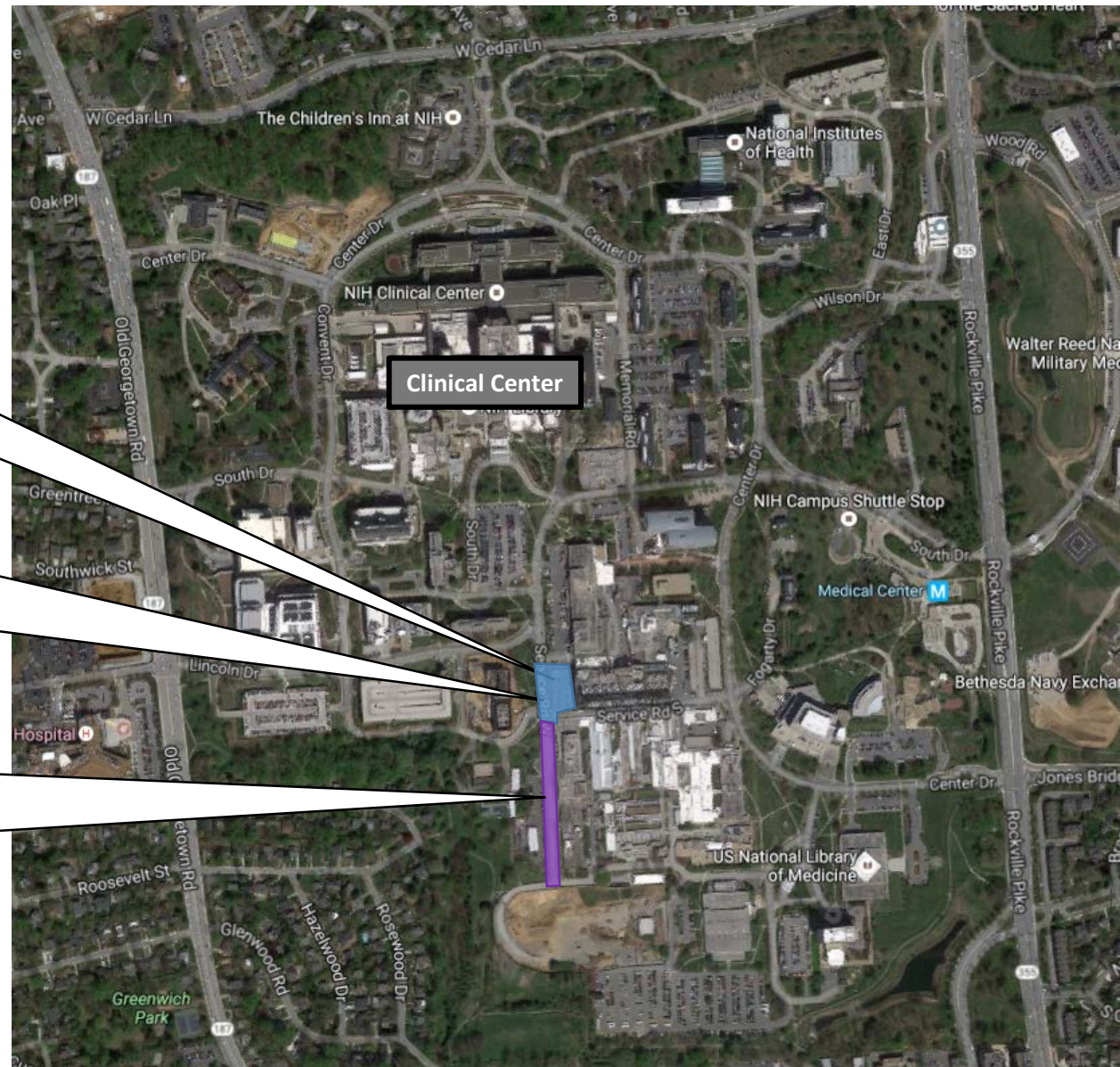
Portions of Parking lot adjacent to Bldg. 11, not available for duration of project, in colored areas, approx. Sept 19, 2016 – Dec. 13, 2016

Phase 1 – From 9/19 – 10/21

- Parking Lot Adjacent to Bldg. 11 will be closed
- No through north/south traffic permitted on Service Rd West from 10/3-10/21

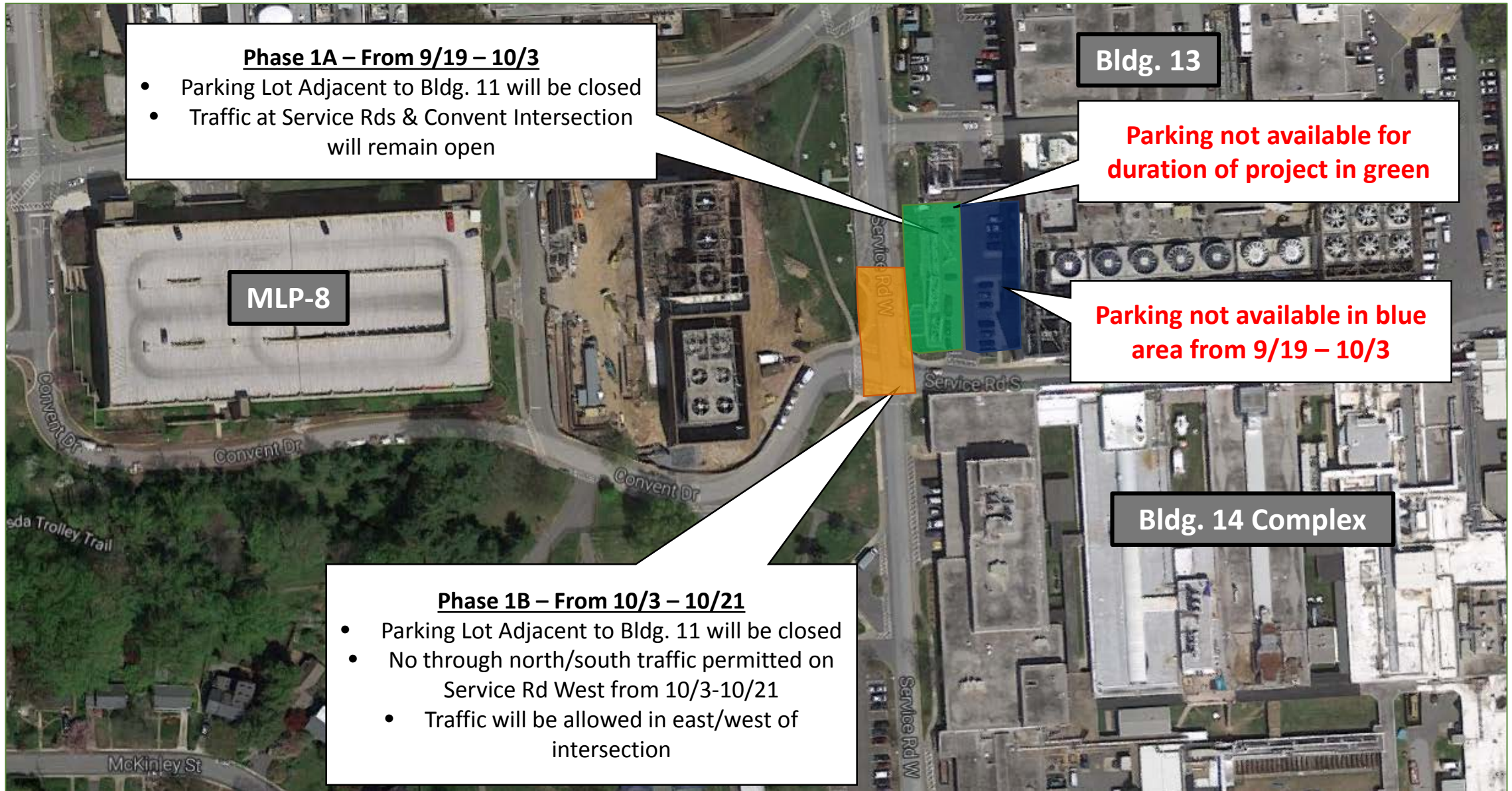
Phase 2 – From 10/21 – 12/13

- Parking Lot Adjacent to Bldg. 11 will be closed
- No through north/south traffic permitted on Service Rd West
- Expect traffic impacts and detours to access loading docks on western Bldg. 14 complex



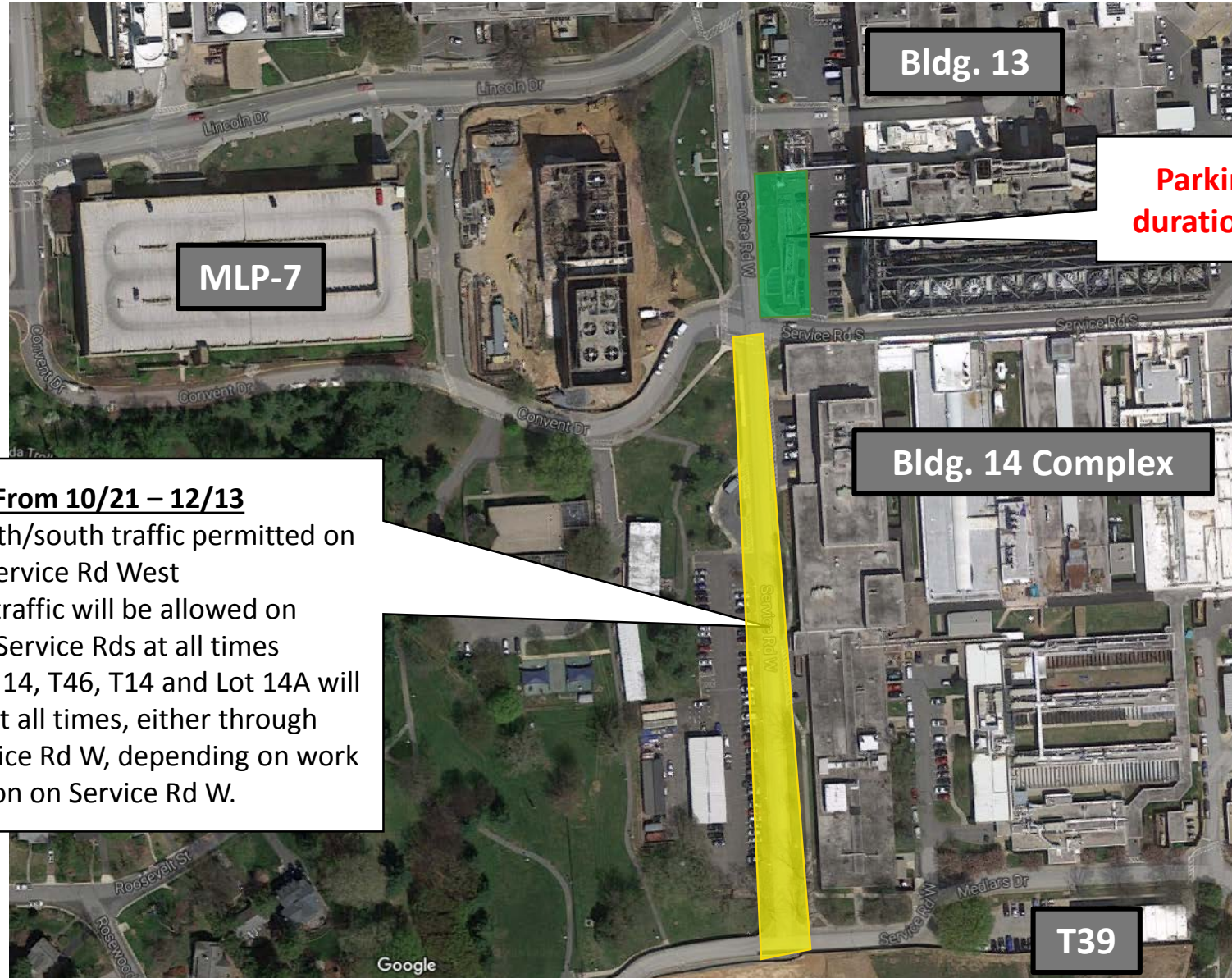
IWSS Utility Service Hook-Up; Service Rd West Closure: Phase 1

September 19, 2016 – October 21, 2016



IWSS Utility Service Hook-Up; Service Rd West Closure: Phase 2

October 21, 2016 – December 13, 2016



Parking not available for duration of project in green

- Phase 2 – From 10/21 – 12/13**
- No through north/south traffic permitted on Service Rd West
 - East/west traffic will be allowed on Convent/Service Rds at all times
 - Access to Bldgs, 14, T46, T14 and Lot 14A will be allowed at all times, either through Medlars or Service Rd W, depending on work location on Service Rd W.